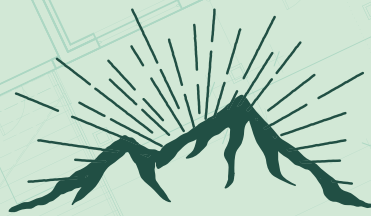


**JOURNEY**  
**OF**  
**HOPE**

**CAMPAIGN**



**SUNNYBRAE**

BIBLE CAMP

- APRIL 2025 -



# OUR HISTORY

---

Rev. George Dawe accepted a call to pastor First Baptist Church, Salmon Arm, in September 1939. Within months, God birthed a vision to start a Bible Camp on the shimmering shores of Shuswap Lake. He later wrote, "We had no equipment, no money, no professional expertise - just a vision and "a will to do His good pleasure." (The Sunnybrae Story, The First Forty Years, By George R Dawe, Founder)

They began with two camps in the spring of 1940, one for the boys and one for the girls. A total of 7 staff served 36 campers, and camper fees were \$1.50 per week. Held on a plot of land in Blind Bay secured with a \$5 handshake, the ministry was expanding so quickly that it needed a more permanent location, and the camp moved to its current location in 1944.

Consisting of the churches of Kamloops, Barriere, Salmon Arm, Enderby, Armstrong, Vernon and Kelowna, the newly formed Association of Fellowship Baptist Churches of South Central BC held a name the camp contest in 1945. So began Sunnybrae Bible Camp - along with decades of development. SBC continued to grow, such that the Association of regional churches launched the Journey of Faith Campaign in 2002. This endeavour seemed especially ambitious, with a goal of \$1.821 million...but God faithfully went ahead. New facilities provided increased ministry opportunities and opened up the winter months with warm dorms and a large Dining Hall.

In 2010, SBC entered into a ministry partnership with Millar College of the Bible, and again, God multiplied SBC's capacity and ministry. It is a privilege to share together in His work.

## MISSION & VALUES

SBC strives to be a dynamic Christian camping ministry committed to a gospel impact by supporting our regional churches in fulfilling their ministry mandate to bring children, youth and adults to the saving knowledge of and maturity in Jesus Christ.

To faithfully enlarge our ministry capacity to serve the gospel mandate of our Fellowship Pacific churches as they pursue a God size impact in South Central British Columbia.

## OUR VISION

# CAMPAIGN VISION

---

**While the JoH campaign significantly enhances the facility, there is so much more to the project.**

The Association of Fellowship Baptist Churches of South Central BC began with just 7 churches in 1941. Those first congregations established the camp and shared in the ongoing vision of SBC. Since then, our region has grown to include 18 churches, and they remain connected to each other and deeply committed to this camp. Their collective impact is immeasurably vast. Really, the story of Sunnybrae is the story of our churches, who are more qualified to reach, teach, equip, and disciple their respective communities than camp

could ever be. If there is to be a revival, we believe that God will accomplish it through the local church's ministry. SBC's role is to support and energize the ministry of our churches by hosting a condensed discipleship experience for as many as we can, reaching new believers and training future leaders to return to their churches. Thus far, this strategy has been effective. Many have been introduced to Jesus. Many have resolved to know Him more. Many have been introduced to a local church. Many have responded wholeheartedly to serving Him.

We believe this campaign is more about shared obedience than it is about enhancing the facility. Buildings cannot inspire hope. Rather, we seek to respond faithfully to His mission as we sense a need, opportunity, and urgency to serve our churches better. Our ultimate vision is that God leads this project for His name's sake.

# CAMPAIGN LAUNCH

---

Over the past decade, the SBC Board has closely monitored growth and recognized the need for expansion and improvements. In anticipation, they diligently worked to achieve a series of pre-campaign goals, including occupancy targets, policy revisions, budget objectives, staffing needs, expansion camps, aesthetic improvements, equipment upgrades, local government compliance, debt retirement, and enhancements to the wastewater treatment system. This ambitious undertaking required millions of dollars, and by God's grace, it was successfully completed within a seven-year timeframe.

With these foundational goals accomplished, the board soon shifted its focus to launching the Journey of Hope campaign. In March 2023, Jim Neustaeter—who previously led the Journey of Faith campaign—was hired as the Campaign Manager to oversee this next phase. His efforts

have been dedicated to working with local government, securing necessary permits, and laying critical groundwork, including various assessments, tests, and blueprint drafts, culminating in CRSD approving our Development Permit for all 3 Phases of the JoH Campaign.

***“All of this preparation leads to the official campaign launch on April 6, 2025”***

Fundraising efforts have been ongoing, with significant pledges already committed. All of this preparation leads to the official campaign launch on April 6, 2025—a milestone moment as we step forward in faith, trusting God's provision for the future.

---

## OUR PARTNERS

---



**BAPTIST HOUSING**  
SENIORS LIVING

The Foundation for Fellowship Baptist Ministries has already generously committed a \$2 million gift to be distributed over three years: \$500,000 in 2025 and 2026, followed by \$1 million in 2027. These funds are provided as matching grants, meaning we must raise \$500,000 by this spring to receive the first installment. As of March 1, 2025, we have already secured close to \$300,000 toward this goal. We are incredibly grateful for their partnership and the bolstering power of this gift.



We are also immensely grateful to Fellowship Pacific and their stance: "Boldly Forward; Never Alone." We are profoundly aware of their sincerity in this conviction.



Throughout this booklet, we will frequently refer to our extraordinary partnership with Millar College of the Bible. We are two distinct organizations yet unified in glorifying Christ by making Him known. Often, campers and students are completely unaware of who is a Sunnybrae staff member and who is a Millar staff member, and this is a beautiful reflection of the desire to outdo each other in showing honour.

# OUR DIRECTOR

---



I will never forget my first experience at Sunnybrae Bible Camp—it was 1999, and I had recently moved to Vernon as a youth pastor. Soon after, I found myself

attending the SBC Annual General Meeting—a beautiful gathering where regional churches shared praise reports of God’s work in South Central BC. At that time, SBC was preparing for the Journey of Faith campaign, a transformative effort that would reshape the entire camp’s property and operations.

Over the years, I became deeply familiar with SBC—speaking at events, sending campers, attending retreats and work parties, and celebrating milestones within the community. In time, I planted a church in the region, and SBC became an invaluable partner in ministry.

A particularly joyful memory is the day in 2012 when SBC called and invited

me to join their team. That moment reinforced my deep commitment to this camp, to the churches of our interior region, to Fellowship Pacific, and now, to Millar College of the Bible.

Today, we recognize that our ability to serve these vital ministries comes to a bottleneck at the limitations of our facility. The Journey of Hope is an ambitious vision, and we understand the challenges—especially in uncertain times. Yet, I remain steadfast in my belief that God will provide, sustain, and multiply His work through this hope-filled journey. We move forward with faith, trusting in His perfect plan.

Tim Paquette

---

# OUR CAMPAIGN MANAGER

At our 2024 AGM in November, our churches voted YES to an exciting and transformative project—the Journey of Hope Campaign— an ambitious build addressing significant facility needs due to our growing ministry and the limitations of our current infrastructure. The primary goal of the campaign is to build a 500-person worship space. This new space will allow us to continue to meet the spiritual needs of our region, our Fellowship churches, and our future Biblically trained leaders.

Currently, our chapel services are held outdoors, which exposes us to the challenges of weather-related disruptions and, more importantly, places us in violation of local noise by-laws. Should action be taken, the camp could be shut down altogether. The lack of a proper indoor worship facility has other detracting implications, including having to move into inadequate spaces during inclement weather, which limits seating. Meanwhile, while beautiful on a sunny day, the current outdoor space is wildly distracting for campers, with people passing by and animals buzzing,

barking, flying and chattering all throughout.

Additionally, this expansion would provide much-needed office & meeting space on the second and third floors, plus housing for our seasonal staff, who currently live in decrepit cabins or, in the case of our female staff, in the basement of the old Heritage Chapel. For the 2 to 4 months that they serve in the spring/summer, our seasonal staff do not have any facilities in their accommodations – no water, toilets, or showers. Rather, they go across the property to the wash house. The new building will provide proper housing for staff, allowing us to care for them, show our appreciation for their ministry, and equip them to serve the camp effectively.

We believe that this expansion will significantly enhance our ability to proclaim the gospel in our region. Our heartbeat is to serve our Lord well through our ministry to the children and families who attend our camp, to all the staff who work here, and to the students who are trained here.



Hope is something our world desperately longs for. Now is the time for Sunnybrae Bible Camp to expand and embrace these growing opportunities to share where true hope is found. We ask you to consider how you can participate in this campaign prayerfully. Just as those before us sacrificed to build and sustain SBC for the past 84 years, we now have the opportunity to invest in its future—ensuring that even more lives are transformed for generations to come.

Jim Neustaeter

# CAMPER TESTIMONIALS



I had a blast! Learning about Jesus and what He does for me and how amazing He really is was a really good lesson for me.



Such a great camp and a blessing to so many!



In July of 1956 I accepted Jesus Christ as my Savior, Lord and friend at the campfire the first night there. Wow.

Was able to return a few summers in a row. Last summer, 2016, I had grandchildren go there. An awesome place!

- Heather



I'll tell everyone in my youth group to join me in coming next summer to Sunnybrae!



Been a long time since I felt this much wonderful love. My youngest son's first time camping is today... [I] started going in the 80s straight into the late 90s...now my son gets to experience the love and wonder God has in store for him.

- Crystal Ann



[My son] had a great time on Friday, and his buddy said it was the best day of his life! Thanks for all you guys do!



Great place, great times. All the fun you could ever ask for!



Excellent people; exceptional facilities; a great message about a magnificent God.

- Bob

## THE ROAD MAP

PHASE 1

PHASE 2

PHASE 3

# PHASE 1

## GYMNASIUM ADDITION

INCLUDES WORKOUT GYM,  
WASHROOMS & SHOP SPACE



**\$750,000**

COMPLETION DATE:  
**2025**



# PHASE 2

## 6-PLEX CABIN



**\$550,000**

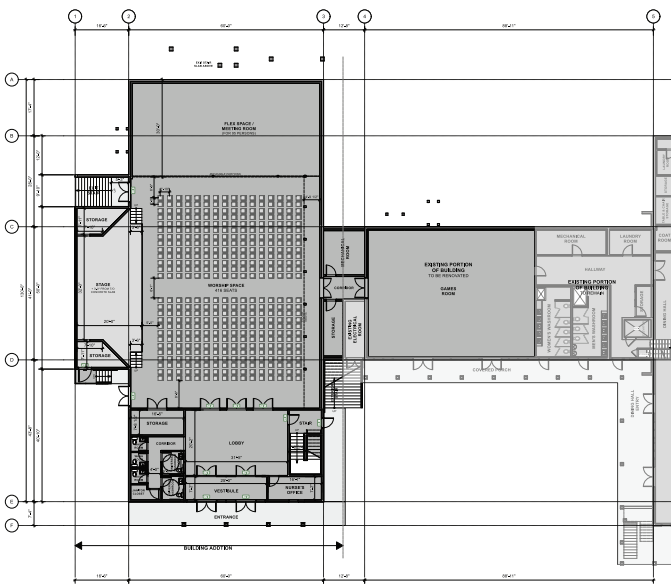
COMPLETION DATE:  
**2026**

# PHASE 3

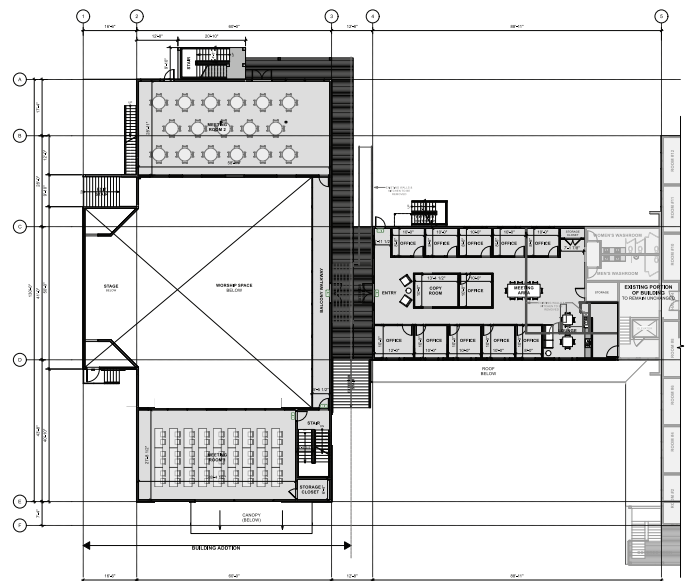
## WORSHIP CENTRE

**\$7.775 Million**

COMPLETION DATE:  
**2030**

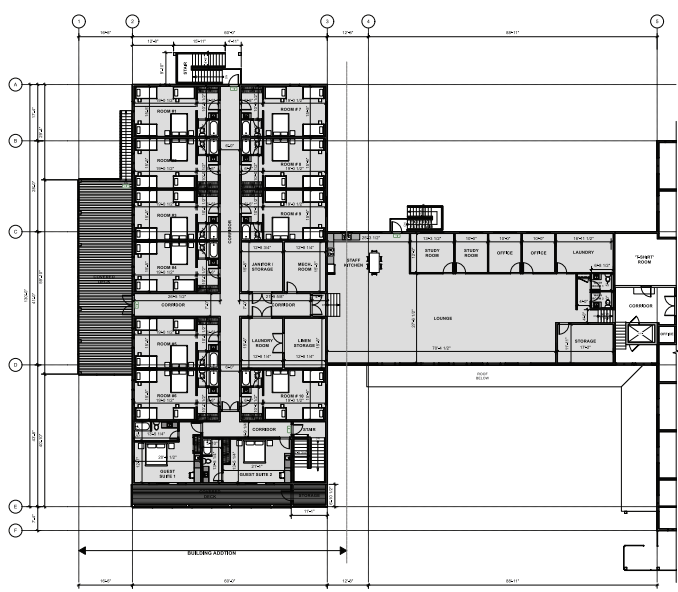


**LOWER FLOOR**



**MAIN FLOOR**





**UPPER FLOOR**

**TOTAL CAMPAIGN COST:**

**\$9.075 Million**

---

# TESTIMONIALS

---



**Steve Janz**  
Director at Millar  
Sunnybrae Campus

For over 13 years, Millar College of the Bible has partnered with Sunnybrae Bible Camp to provide students with a transformative educational experience rooted in God's Word. Since launching our Sunnybrae campus in 2012 with just 24 students, we have grown steadily, reaching full capacity in 2019 with approximately 95 students enrolled each year. Looking ahead to the fall of 2025, we have received 88 completed freshman applications, with 50 students set to join our first-year program. This overwhelming interest attests to a growing hunger among young people to study the Bible in a Christ-centered community where their faith can flourish.

Sunnybrae Bible Camp's vision for a new building project will further enhance our ability to welcome more students in the years to come. We are profoundly grateful for God's provision and the impact of this partnership in British Columbia.

At Millar, our mission is to develop passionate and relevant servants of Jesus Christ, shaped by the entire Scriptures. Seeing our students leave with a deeper love for Jesus, a stronger commitment to the gospel, and an unwavering dedication to serving the lost brings us immense joy. Many go on to play active roles in local churches, both in our region and beyond. As we look to the future, we trust in God's exceeding kindness, continued faithfulness and eagerly anticipate what He has in store. To Him be all the glory!



**Ken Beasley**  
SBC Board Member

Sunnybrae Bible Camp holds a very special place in our hearts. Our connection to the camp spans four generations and over 40 years. The past 29 years, in particular, have profoundly shaped our family. Family camps became a cherished summer tradition—offering us, as weary parents of young children, a place of physical and spiritual

renewal while reconnecting with old friends and making new ones.

All four of our children attended Sunnybrae, first as campers and later as summer missionaries. For each of them, it became a place of joy and growth—an environment where their faith was deepened and their hearts were equipped for service. Our youngest will soon complete her eighth summer of serving at camp, continuing the legacy of ministry that has become so meaningful to our family. Now, as our grandchildren follow in their footsteps, we are blessed to witness the same love of Jesus being poured into them. Two of our children further solidified their faith and graduated from Millar's Sunnybrae Campus, a testament to the transformative impact of this ministry.

I have found profound joy in serving over the years—helping as a boat driver and assisting in the kitchen. Today, I have the privilege of serving as Chair of the Sunnybrae Board and as a board member for Millar College of the Bible.

We have personally experienced the benefits of the first Journey of Faith, from improved accommodations (including the much-appreciated air conditioning!) to an enhanced dining space and kitchen. These upgrades made camp operations smoother and greatly supported the dedicated kitchen staff in their service.

Now, we eagerly anticipate and wholeheartedly support Sunnybrae's Journey of Hope. These new additions and improvements will expand the Kingdom's impact, ensuring that future generations will experience the same spiritual growth, community, and discipleship that have meant so much to our family.

We are truly grateful to be part of God's incredible work at Sunnybrae Bible Camp.

# JOURNEY OF HOPE CAMPAIGN

**Never before has Sunnybrae attempted a capital campaign of this magnitude, but with God's leading, we are confident of reaching and even surpassing our goal.**

If everyone welcomes this challenge of faith and responds generously, Sunnybrae Bible Camp, by God's grace, will be strengthened, and we will accomplish our mission. The time is now for parents, grandparents, alumni and supporters to respond to this challenge of acting on this hope we have. Every family or individual associated with the camp will be invited to make a financial pledge to the campaign over a five-year period. Faith promises pledged over this period will enable the board to plan our long-term financial needs effectively.

Our camp board policy is to proceed with each phase when we have 50%

of the funds in hand and the other 50% pledged. The camp is a community of Christian stewards who know that they have been entrusted with the responsible management of God's affairs within the camp. We manage the camp to accomplish God's will, and we want to do so both in faith and in wisdom.

Your financial gift will translate into an asset that will equip our children and families for life. It is a gift that will continue giving, long after it has been made. The key to our Journey of Hope Campaign is sacrificial giving, which will mean something different to each person. To some, a gift of even moderate size will represent a

sacrifice, and in other cases, a larger, more substantial gift will be possible.

***"The key to our Journey of Hope Campaign is sacrificial giving, which will mean something different to each person."***

"Equal sacrifice, unequal gifts" is the foundation for giving to this campaign. We invite you to join us in this renewal and expansion project to progress Sunnybrae Bible Camp's future impact.

Come along on our Journey of Hope!

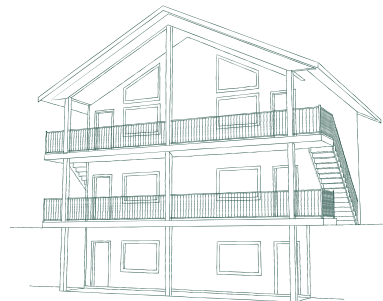
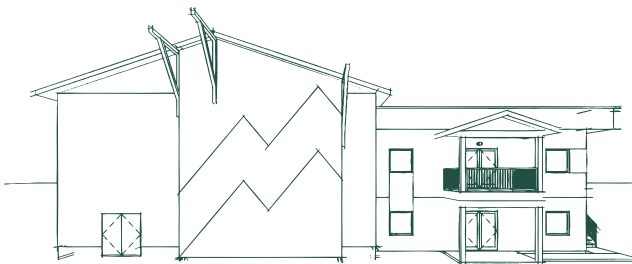
# GIFTING CHART

In faith, we are asking donors to commit to monthly giving for the duration of the Campaign - 60 months (5 years). **If 1,000 people pledged \$125 per month, or 500 people pledged \$250 per month, the Campaign would be fully funded.**

Moving forward together on our Journey of Hope with everyone giving according to equal sacrifice - not equal amounts - we uphold Sunnybrae to fulfill God's purpose.

To raise the \$9.075 million required, the following is a projected Giving Chart of the kind of gifts required to reach the financial goal:

GIFT LEVEL	NUMBER OF GIFTS REQUIRED	TOTAL AMOUNT	CUMULATIVE TOTAL
Up to \$2,500	Many	\$125,000	\$125,000
\$5,000	50	\$250,000	\$375,000
\$10,000	50	\$500,000	\$875,000
\$20,000	25	\$500,000	\$1,375,000
\$25,000	30	\$750,000	\$2,125,000
\$50,000	13	\$650,000	\$2,775,000
\$100,000	5	\$500,000	\$3,275,000
\$200,000	4	\$800,000	\$4,075,000
\$500,000	3	\$1,500,000	\$5,575,000
\$750,000	2	\$1,500,000	\$7,750,000
\$1,000,000	2	\$2,000,000	\$9,075,000



# TAX CREDIT CHART

Based on current tax laws, the tax credit for giving in excess of \$200 is 29% regardless of income level. Your tax credit will depend upon your net income level.

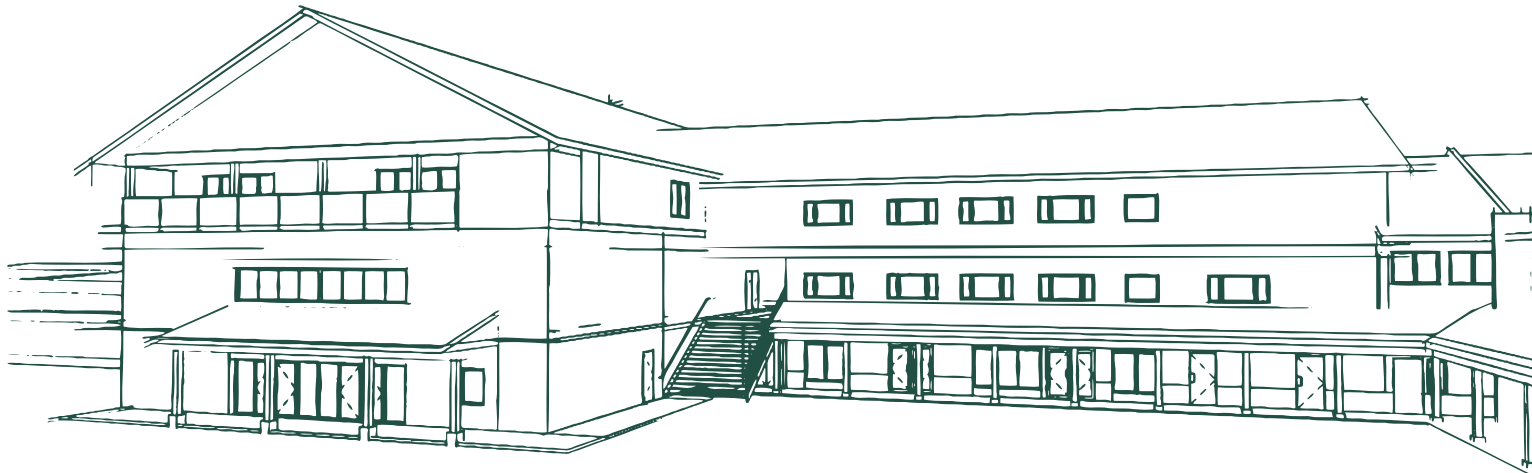
Please consult your own tax advisor. The following table indicates example of tax credits:

GIFT TO THE CAMPAIGN	MONTHLY COMMITMENT**	TAX CREDIT*	ACTUAL COST TO GIVER*
\$1,500	\$25	\$435	\$1,065
\$3,000	\$50	\$870	\$2,130
\$5,000	\$84	\$1,450	\$3,550
\$10,000	\$167	\$2,900	\$7,100
\$25,000	\$417	\$7,250	\$17,750
\$50,000	\$834	\$14,500	\$35,500

\* Based on a marginal tax rate of 29% regardless of income.

\*\* Based on a commitment over 5 years (60 months).

If a gift exceeds 75% of the net income, the tax credit for the gift can be claimed over 5 years.



# OTHER WAYS TO GIVE

## PLANNED GIVING

What is planned giving? It is simply gift planning - and every gift, regardless of size, is vital and important. Planned gifts are valuable because they qualify for charitable receipts and lower the net cost to the donor. These gifts also allow donors to make a significant gift without negatively affecting the donor's current financial circumstances.

There are two major categories of planned gifts. *Present gifts* may be cash, existing life insurance policies, interest-free loans, stocks, bonds or mutual funds. *Deferred or future gifts* may include bequests, life insurance proceeds, charitable gift annuity or a charitable remainder trust.

## BEQUESTS THROUGH A WILL

An easy way to leave a final gift to SBC. You can either leave a specific gift of cash, artwork or other assets, or a portion of your estate.

## CHARITABLE GIFT ANNUITY

Receive tax-free retirement income along with an immediate gift to SBC.

## GIFTS OF SECURITIES & MUTUAL FUNDS

A great way to support SBC while reducing the capital gains you owe.

## CHARITABLE REMAINDER TRUST

Place cash, property or securities in trust for SBC and receive a guaranteed income for life and substantial tax savings.

## LIFE INSURANCE

A gift of an existing policy will give you a tax benefit today and a future gift to SBC. With the modest monthly insurance premium of a new policy, you can leave a substantial legacy to SBC, and your annual premiums are tax deductible.

## PLANNED GIFTS are an investment in future generations.

Gifts in either category require careful planning to take advantage of Canada's tax laws, which are designed to encourage generous giving. Be confident that all gifts to SBC, regardless of size, contribute to our success in fulfilling our campaign goals. God has entrusted us with this moment in Sunnybrae's Journey of Hope. Together, we seek to live out our vision of Christian service and mission. This is a time for moving forward together for our future.



Him we proclaim, warning everyone and  
teaching everyone with all wisdom, that we  
may present everyone mature in Christ.

For this I toil, struggling with all His energy  
that He powerfully works within me.

Colossians 1:28-29

**WANT MORE INFO?**

Visit [sunnybrae.ca/JourneyOfHopeCampaign](https://sunnybrae.ca/JourneyOfHopeCampaign)



**JOURNEY  
OF  
HOPE**  
CAMPAIGN

